

# The Signal

The Great Falls Model Railroad Club



VOLUME 21. ISSUE 2

JULY 2013



Member since June 1988

**NEXT MEETING**  
July 18  
6:45 p.m.

**NEXT MONTH**  
**Deadline for**  
**August Issue**  
July 29, 2013

**MEMBERSHIP**  
125

**ATTENDANCE PRIZE**  
No One won the  
attendance prize.

Paul Lodge won the  
50/50 raffle.

Will your name be  
drawn on **July 18?**  
You have to be  
present to win!

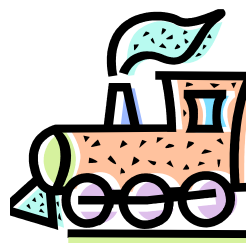
## BOTTLES FOR BASICS

- ◆ Total LAST YEAR
- ◆ \$363.85
- ◆ YEAR TO DATE:
- ◆ \$176.50
- ◆ THIS MONTH:
- ◆ \$54.50

## NEW TRAIN FEST IDEAS FOR THE BALLOON FESTIVAL

Paul Lodge

Using the Lewiston-Auburn Balloon Festival as the theme for our Train Fest, we plan to have as many "hot-air balloons" as possible for the August 17 activity at the club. Paul Lodge exhibited some paper hot-air balloons, created by gluing the design to a DVD for weight and structure. He also suggested that "baskets" can be added to the balloons donated by Governor's Restaurant and then hung throughout the building. Where there are suspended ceilings, clips can be used to anchor the hot-air balloons. Members were asked to donate as many models and pictures of hot-air balloons as they can find. Model hot-air balloons are available, but they are expensive. There are paper fans which open into hot-air balloons, but we do not have any. Paul Lodge is going to paint a scenic backdrop on a 4- by 4-foot piece of homasote on which children can pin paper balloons on which they have written their names. It was suggested that homasote could also be used to create a game of "Pin the Caboose on the Train." Bryce Weeks suggested using blown up balloons to propel HO cars down two parallel tracks as part of a race. If anyone has additional ideas to help the Train Fest be more successful, please get in touch with one of the members of the Executive Committee.



**MEET THE MEMBERS****Ken Nettleship****By Maurice Fortin**

Ken Nettleship has been married to Daphne for 25 years. He is employed at Legacy Publishing as a media buyer and has worked for this firm for 14 years.

His interest in model railroading started in 1969 when his father and grandmother bought a Trix layout as a gift for him and his brother. From this, he got the bug for model railroading. On the front page of the April issue of *The Signal*, there is a feature article about Ken's further involvement in model railroading entitled "It's a Small World." A portable n-scale layout which Ken had begun in 1988 and donated to Rainy Day Trains in 1988 was brought to GFMRRRC in March by an Operation Lifesaver member who gave it to the club. Although no one realized its origin at the time, Ken was surprised to discover it at the March 21 club meeting.

At home Ken has a 14- by 14-foot N-Gauge layout based on the Rutland Railroad. His outdoor layout is called the Kokomo Railroad. The idea for the name came from a line in the Beach Boys' song "Kokomo"—"that's where you go to get away from it all." The Kokomo Railroad will be based on New England from the 1900's to the 1940's, but an occasional diesel will make an appearance. Ken explained, "The outdoor layout came to fruition from the encouragement of Ed and Brenda Leslie, Dick Clark, Ray Parent, and Dave and Sandy Kierstead to build it. And then they came over and helped to make it happen! This was a group effort, and I am forever grateful for the group's help!"

Ken has been a member of the Great Falls Model Railroad Club for about three years. He has become a leader in the continued evolution of the G-scale layout and is currently the chairman of the group. He works by holding regular meetings with the other G-scale members and communicating all that needs to be done. He is involved in the G-

scale work sessions on Wednesday nights and Saturday mornings and participates in most club activities and train shows.

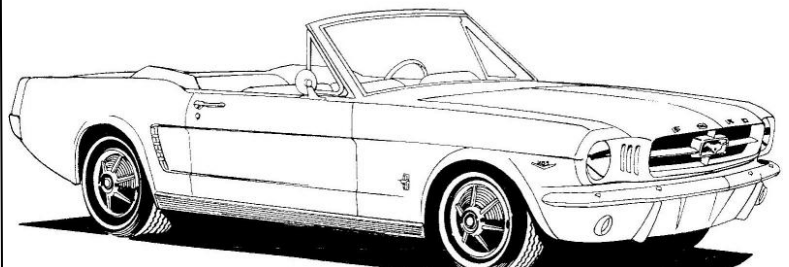
When he is not working or busy with the Great Falls Model Railroad Club G-gauge layout, Ken enjoys hunting and driving his 1966 Mustang. This brings back a lot of memories for me. When I was in college I went to a dealer in 1965 to see the original Mustang. Wish I had one!

**DID YOU KNOW?****Paul Lodge**

Bob Willard took some time to explain to the club members present at the June 20 meeting the origins of train shows in Maine. In the late 1970s, Al Thurston and Wally Chase started train shows in Auburn, which were the first in the state. Al and Wally were members of the Seacoast Division of the National Model Railroad Association. For ten years, they hosted train shows at various locations in Auburn, including the hotel at the Auburn exit of the Maine Turnpike, the Stephens Mills Grange Hall, the Auburn Armory in Pettengill Park, and finally the Auburn Middle School.

Being members of the Seacoast Division was an advantage to Al and Wally. Modelers from the South Shore Model Railroad Club in Massachusetts came to the show annually. After the show, it was a tradition to go together to Happy Jack's for dinner. After the meal, Wally invited members from the South Shore club to his house to operate his railroad. At one of the train shows at the Auburn Armory, there was a clinic on using spirea for model trees. After the clinic, participants went outside the Armory and stripped all the spirea in sight.

The last show at the Auburn Armory was an experience. Even though the Armory had been reserved for the train show, Al and Wally discovered at the last minute that the Armory floor was being renovated. They quickly made arrangements to move the show to the Auburn Middle School. People and signs were left at the Auburn Armory to direct guests to the new location. Some of the local railroad enthusiasts who attended their shows would later form the Great Falls Model Railroad Club. After the Great Falls Model Railroad Club was formed in 1987, Al and Wally transferred responsibility of the show to the club. Our November train show has been at Auburn Middle School ever since.



## SEACOAST DIVISION SUMMER MEETING AT THE CLUB IN AUGUST

**Peter McKenney**

The Seacoast Division of the National Model Railroad Club will hold its summer meeting at the Great Falls Model Railroad Club on Saturday, August 3 from 10 a.m. to 2 p.m.

Clinics are planned during the day. Rick Mills will conduct a clinic called "Realistic Train Operations on Model Railroads." This presentation is about getting an operation system up and running with a minimum of paperwork and cost. Start with a concept of interchange flowing in and out, develop a schedule to allow freight and passenger traffic to co-exist using a string diagram, and then set up a card-order system for freight. This system is suitable for single or multiple operators.

Great Falls Model Railroad club member Tom Coulombe will present a clinic on "Orientation for Operating on the GFMRR Club's HO Layout." Tom and other members of the club will provide an overview of the layout and prepare attendees to have fun operating trains on the layout.

**Show and Ask:** Participants are encouraged to bring examples of their modeling to show to other attendees for educational purposes. If you have questions, a panel will be available to answer as many as they can. Take advantage of the cumulative experience of all of the attendees to make your modeling experience more enjoyable.

A two-hour operating session will occur on the club's HO layout, with dispatching and assistance from members of the GFMRR Club. Have fun with others running trains on the layout and participating in a basic operations activity.

Lunch will be available on-site for purchase from GFMRR Club.

Come to the summer meeting and Share the Fun of Model Railroading.

There will be a Board of Directors meeting for the Seacoast Division following the program.

## ANNUAL CLUB PICNIC AT LODGES IN AUGUST

**Paul Lodge**

Every year club members are invited to a summer picnic. At this informal gathering, you can relax, socialize, and meet with members of other families who may not attend other club events. The pot luck meal is always tasty and there is more than can be eaten in one sitting. So we eat all day long.

This year the annual club picnic will be held on Saturday, August 10, at the Lodges' home in West Minot. The event will start at 10 a.m. and go until the last person leaves.

There are extensive flower gardens. Nature walks in the woods may include splashing in the brook and visiting the site of the old sawmill owned by Frances' grandparents. The brook is not deep enough for swimming, but anyone who would enjoy wading should wear shoes in the water as protection from rocks.

Yes, there is also an HO layout in the upper portion of the barn.

Members are encouraged to bring friends and pets, lawn chairs, and food to share.

Plan ahead for August 10, and come to enjoy each other's company.



Sibylle and Reinhard Noack from Cottbus, Germany toured the club.





# June Minutes by Paul Lodge

## MINUTES OF June 20, 2013 MEETING

Before the meeting started, club members were treated to a slide presentation made by Ed Leslie showing club activities from last month. The evening's *TRAIN TIME* program featured the trains in California on the Feather River Route.

President Ed Leslie opened the meeting and asked for the Secretary's Report. A motion was made to accept the report as published in *The Signal*.

Tom Coulombe gave the Treasurer's Report, which was approved as given. He noted that a letter asking members to pledge funds in addition to their dues was sent to all club members. About \$400 has been pledged as a result of the letter. Members who are part of the Power Team were reminded to give Tom the money for their pledges.

As Station Master, Tom Coulombe said that an air conditioner, which will also act as a dehumidifier, is being installed near the double doors on the lower level. There are plans to power wash the concrete wall to get rid of any peeling paint before the wall is repainted. President Leslie thanked those members who have been helping Tom with the mowing and weed whacking.

On the HO layout, Gary Thibeault reported that some LED lighting has been installed and is working well. Turnout control panels are being worked on and two more staging yards are being built.

On the N-Scale layout, additional buildings have been constructed by Nick Matluk, Ray Houlihan, and others.

### TRAIN SHOW AT THE AUBURN MALL

On Saturday and Sunday, August 24 and 25, the Auburn Mall will be the site of a train show we are conducting. For layouts, we plan to have the G-gauge group, On30 layouts, and our HO modular layout. Displays will be set up on Friday evening, August 23. This show is an attempt to have a train show at the mall similar to what we have at the

Auburn Middle School. Using empty store fronts, we will be selling surplus inventory and offering clinics.

At last month's meeting, officers for next year were elected without naming a vice-president. Tom Coulombe nominated Roger Plummer to fill the position of Vice-President. The nomination was seconded and voted upon. Roger Plummer is the new Vice President.

Under new business, Paul Lodge explained the attempts being made to contact the New Auburn Little League to see if we can work together to provide advertising for the club and to make our facility available for after-the-season activities for the boys. He also reported that a non-member suggested that we get involved in the Moxie Parade in Lisbon on Saturday, July 13. Tom Coulombe noted that we could use the LED lights as part of the display. Paul Lodge is working on an addition to the children's play area, a portable layout at a child's height using Brio tracks and trains.

It was suggested that we decorate the building with as many "hot-air balloons" as possible for the club's Train Fest on August 17 during the Lewiston-Auburn Balloon Festival. There are more details in a separate article elsewhere in this newsletter.

Bob Willard made a presentation for the "Did You Know?" segment of the meeting. See details of the presentation in the "Did You Know?" article elsewhere in the newsletter.

Bob Willard also did the "What's On Your Workbench?" presentation. Bob is an On30 modeler and uses his modules at shows. Currently, Bob is constructing a platform on which trains can be turned around after they reach the end of the modules. There is room for three trays, each of which can contain a whole train. The trays can be turned around and the trains sent back in the opposite direction.

Stephen Martelli gave a presentation about the trip he plans to make on the Appalachian Trail in 2014. He has received sponsorship for this event and plans to take video of trains which he passes on the route.

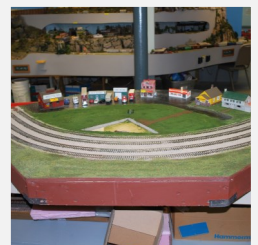
(Continued on page 5)

No one volunteered to make presentations next month for "Out of the Boxcar" or "What's on Your Workbench?"

Four names were drawn for the Attendance Prize. Even though they had been at the meeting earlier, Jerry Johnston and Larry Cannon were not present when their names were drawn. John Visco and Dave Kierstead's names were also drawn, but they were not present.

Paul Lodge won the 50/50 raffle.

The meeting adjourned.







## THE GREAT FALLS MODEL RAILROAD CLUB

144 Mill Street  
Auburn, Me 04210

207-576-3788

e-mail [gfmrrc@ne.twcbc.com](mailto:gfmrrc@ne.twcbc.com)

### An Educational Foundation

#### MEETING POSTPONEMENTS

If severe weather threatens on a meeting night, Tom Coulombe will notify local television stations that the meeting will be postponed until the following week. This would make it the fourth Thursday of the month instead of the third. Club members who receive the newsletter via e-mail will be notified by e-mail about the postponement.

### OFFICERS:

#### President:

Ed Leslie - 265-6547  
[mrandsrdeere@maine.rr.com](mailto:mrandsrdeere@maine.rr.com)

#### Vice President:

Roger Plummer

#### Secretary:

Paul Lodge - 966-3641  
[paulldodge@ghi.net](mailto:paulldodge@ghi.net)

#### Treasurer:

Tom Coulombe - 240-9913  
[ctcoulombe@aol.com](mailto:ctcoulombe@aol.com)

#### Directors:

Roger Allen-783-2129  
Jay Calnan-783-1719  
[jayceeltc@live.com](mailto:jayceeltc@live.com)  
Travis Johnson-576-9130

#### Webmaster:

Joe Marshall - 344-7099  
[joe@braintriggers.com](mailto:joe@braintriggers.com)  
Assistant Webmaster:  
Frances Lodge - 966-3641  
[paulldodge@ghi.net](mailto:paulldodge@ghi.net)

#### Librarian/Archivist

Terry King  
[tpking@roadrunner.com](mailto:tpking@roadrunner.com)

### THE SIGNAL

The *Signal* is published twelve times per year by The Great Falls Model Railroad Club.

Copyright 2013

#### Editor:

Rick James  
[N1wfo@roadrunner.com](mailto:N1wfo@roadrunner.com)

#### Proofreader:

Frances Lodge  
[paulldodge@ghi.net](mailto:paulldodge@ghi.net)

### Address Change

If your mailing or e-mail address changes please notify  
Terrence King at  
[tpking@roadrunner.com](mailto:tpking@roadrunner.com)

[www.greatfallsmodelrrclub.org](http://www.greatfallsmodelrrclub.org) or [www.gfmrrc.com](http://www.gfmrrc.com)

## Upcoming Events



**July 11**, Executive Committee meeting

**July 18**, Membership Meeting

**July 20**, Operating Session

**August 3**, Seacoast Division Meeting at the Clubhouse

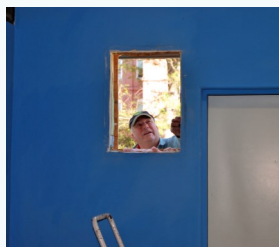
**August 10**, Club Picnic

**August 17**, Train Fest

**August 24**, Train Show Auburn Mall

**November 2**, Train Show:  
Auburn Middle School

**November 23-25 and 29-30**: ExTRAINaganza



This hole wasn't here yesterday?

**STEVE!!!!!!!!!!!!**

**September 7-10, 2016**, 36th National Narrow Gauge Convention at Augusta, Me.

