



Members since June 1988

The Signal

May Edition
2016

Signal indicates **STOP AT**
OUR NEXT MEETING
May 19, 2016 6:45 pm

Learn new techniques

Our 135 members can help
answer your questions at meetings!

Involve friends & relatives

Meetings demonstrate how
Hobbies impart Organizational Skills
Division of Administrative Duties

"The achievements of an
organization are the results of the
combined effort of each individual."
- Vince Lombardi

Have a story you want to share?

Share your account at the meeting!

Or publish it in our newsletter!
Let us know by April 25, 2016
Email secretary Paul Lodge
See back page for contact info . . .

Do you want to win

Attendance & 50/50 prizes?

**Don't let somebody else
have the advantage of
retiring flush with cash
from the winning prize!**

You must be present to win!

DONATIONS . . .

Bottles for Basics (B4B)

Total Last Year \$ 700.23
YTD \$814.00
Last month: \$ 135.00

Used Printer Cartridges

Last month: \$ 22.00
YTD: \$ 220.00

Why donate to Great Falls?

- Your donations are a perfect way to **expedite your spring cleaning!**
- Save time and effort with our bottle dropoff; **Avoid waiting in line at redemption center!**
- Donations help keep dues low.
Low dues = More members.

Fifth Annual HOBO Holiday MAY 21, 2016

The fifth annual Hobo Holiday will take place on Saturday, May 21, at the clubhouse from 10 a.m. to 4 p.m. Guests will be able to sample **Jerry Johnston's Hobo Stew**, which includes his famous "secret" ingredient. A brochure about "Hobo Folklore" will be given to each family. Hobo symbols will be placed around the clubhouse telling other hobos about potential dangers or places where they are welcome.

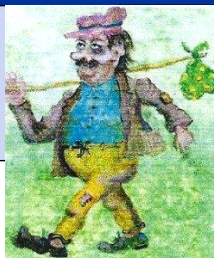
Railroads are private property and hobos rode the trains illegally. As a railroad club, we do not want to encourage trespassing on railroad property. One of the features of the Hobo Holiday will be a Railroad Safety Quiz. A sheet with a number of questions suggested by Operation Lifesaver members will be answered by participating families.

Throughout the building, Operation Lifesaver railroad safety posters will be displayed with information which can be used to answer the Railroad Safety Quiz. Once the quiz has been finished, a club member will correct it. Participants will then be able to enter their names in a drawing. They could win a gift certificate from Governor's Restaurant or a free pass to ride on one of the participating tourist railroads in Maine.

Club members and guests are encouraged to dress up as hobos or railroad engineers or conductors to help add a festive atmosphere to the Hobo Holiday.

There will be many opportunities for club members to help. Adults are needed to run the games and collect Hobo Bucks and to sell raffle tickets. The HO layout will be available for guest engineers to operate and that can take a lot of manpower. The G-gauge and N-scale Divisions will also need supervision.

Even though this is a fund-raiser for the club, it is also a chance to come together and have some fun as a group.



HOBO Holiday Fun for Families and Children

For the children (and some adults), the popular "Hoop a Caboose" ring-toss game will be available along with the "Roundhouse Roulette" game. The "Fishing Pond" will be set up so that children can "fish" off the bridge and catch a prize. This will be the first time that the "ride-on" locomotive donated by Joseph Gilbert will be available for Hobo Holiday.



TRAIN TIME videos will be playing during the day to help entertain the adults while they are eating or watching their children in the play area. The videos can also be purchased during the Hobo Holiday. The Company Store will be open for those who wish to buy model railroad cars, railroad books, memorabilia, and other items.

Thomas the Tank Engine is always a popular part of small children's experience during this event. This year the Thomas area has been up-graded again. While club members run locomotives on the upper level trestle, children can run Thomas on the lower level.



A scavenger hunt will be set up for families to find items in each of the clubhouse rooms. The purpose of the scavenger hunt is to get everyone to see all that the club has to offer from the layouts and the learning center area to the library/museum and Company Store.

Admission to the event is only \$3, with children 12 and under entering free. For Guest Engineers and those activities which offer prizes, "Hobo Bucks" will be sold at \$1 each or seven for \$5.

Paul Lodge



Reminder from Nancy Anderson

If you have one of the Operation Lifesaver T-shirts with the
"See Tracks, Think Train"
logo that were given out last year, please wear that for the Hobo Holiday to reinforce the
railroad safety theme



Member
#076805 00
Since 1988

Congratulations
to all of you
who helped make the
Mt. Ararat train show
a success!

GFMRRRC member
Tom Coulombe
at the
surplus inventory
sales table.

MT. ARARAT: ANOTHER SUCCESSFUL SHOW !

On Saturday, April 30, the Great Falls Model Railroad Club held its annual spring train show at Mt. Ararat High School in Topsham. About forty club members participated in the show by helping to set up or tear down the tables and modules, selling tickets at the door, selling surplus assets, running the raffle layout, and operating the HO modular layout.



A large number of people came to the show in the morning. It slowed down at about noon, but it was a good day for sales and door receipts. We out-did our sales from a year ago. It is because we have such a good turnout of club members to help run the show that we can repeatedly have successful events. Congratulations to all of you who helped make the train show a success!

A new feature this year was the inclusion of the modules from the **Maine Narrow Gauge Group**. They set up three different layouts in the corridor near the entrance of the building. These displays were lighted and highly detailed, and created many "oohs" and "aahs" from those seeing these modules for the first time. An eight-foot narrow gauge portion of **Wally Chase's** HOn3 layout was also exhibited, thanks to **Bob Willard**. See article in next column.

Food service was provided by the Mt. Ararat Sports Booster Club, and they were busy from before the show until after noon.



Tom Coulombe was able to attend the show for nearly an hour. Several members were able to talk to Tom while sales were being made at the surplus inventory sales table.

By Paul Lodge

NARROW GAUGE DISPLAYS AT MT. ARARAT SHOW

This year for the first time the Maine Narrow Gauge group participated in the show sponsored by the Great Falls Model Railroad Club. In addition to outstanding narrow gauge layouts, they sponsored four modeling contests and a "People's Choice" award.

Craig Stedman from Hartland, Vermont, exhibited his HOn30 layout which features a harbor scene on the waterfront. **Frank Knight** displayed his outstanding Sn2 narrow gauge layout, and Bob Willard and Greg Ouellette's On30 exhibit had many admirers. **Bob Willard** also brought Wally Chase's HOn3 Surry and Alna portion of his layout which was salvaged from the tear down of Wally's layout.



The Maine Narrow Gauge group sponsored modeling contests in dioramas, rolling stock, structures, and special equipment. Special recognition was given to the modeler for the "People's Choice" award.

Richard Holman won the diorama contest and **Bob Willard** won the rolling stock contest. The structures and special equipment contests were won by **Bob Bennett**. **Bob Bennett** also won the "People's Choice" award distinction.

By Paul Lodge

Maine Narrow Gauge Group at Mt. Ararat

"Their displays were
lighted & highly detailed"

"The incredible details solicited
many "oohs" and "aahs"
from those seeing these modules
for the first time"



<— This photo shows the two HO RDC's running in tandem that Sharon Barber brought to the Topsham show. Rail Diesel Cars (RDC's) were single unit passenger cars that could be combined into longer trains. Built in the 1950's, they were designed to be cost-saving alternatives to fully equipped passenger trains. All the trains into Boston used RDC's when Sharon was growing up in the Boston area.

 <p>MEETING MINUTES of March 17, 2016</p>	<p>CLOUGH DONATION TO HELP RETIRE MORTGAGE</p>	<p>PHIL CLOUGH 1926 - 2016</p>
<p>A Power Point slide show of club activities in March and April was shown from 6:45 to 7:00 p.m. Part of the Power Point show was dedicated to members Phil Clough, who passed away on April 4, and to Paul Vallee, who died on March 20.</p> <p>Instead of the Train Time video, a special Power Point tribute was given to Tom Coulombe, showing some aspects of his outstanding leadership to the club, Operation Lifesaver, and Boy Scouts and as an income tax preparer for AARP. Tom was given two standing ovations at different points in the presentation to show our appreciation for all the things he has contributed to the club in time and leadership. Jerry Johnston also gave an emotional speech thanking Tom.</p> <p>President Jay Calnan opened the meeting and asked for the Secretary's Report. A motion was made to accept the report as published in the Signal.</p> <p>The Treasurer's Report was approved as given.</p> <p>As Station Master, Jerry Johnston reported that Carl Butland has installed the baby-changing station in the upstairs bathroom. Foam hand-cleaning dispensers have been installed in both bathrooms.</p> <p>Bob Willard invited members to attend the Modelers Forum on the fourth Thursday of the month. Members are encouraged to bring something that can be shared as a "show and tell" item.</p> <p>The G-gauge Division has installed twelve locked drawers in a cabinet donated to us by Craft Mania. They will be used to store locomotives and rolling stock and will be especially handy for storing equipment brought by club members for our events. They plan to have an operating session on Saturday, May 7.</p> <p>Darin Long reported on the progress on the HO Division layout. The internal telephone system is not yet being used.</p> <p>Jerry Johnston noted that Benton, Kerry and Julie Hayes volunteered to be caretakers of the N-Scale Division. They have been working to clean the layout and place additional structures on it. Julie is planning to alter the skirts from Wally Chase's layout so they can be used to cover the storage area under the layout.</p> <p>Bob Willard reported that the 36th National Narrow Gauge Convention in Augusta on September 7 through 10, 2016, has already had applications from 87 vendors and will have at least 90 clinics. People have registered from four continents, and the number of registrations has already exceeded the number from last year's Houston convention. This is the first time in five years that the show has been held on the East Coast.</p> <p>Bob Willard also noted that he plans to bring the HO_{N3} portion of Wally Chase's layout to our April 30 show in Topsham.</p> <p>Reporting for the Nominating Committee, Darin Long submitted the following slate of officers for next year: Jerry Johnston, President; Roger Plummer, Vice-president; Paul Lodge, Secretary; Owen Buck, Treasurer; Terry King, Librarian/Archivist; Directors: Dan Collins, Darin Long, and Roger Allen. The following additional members were nominated from the floor for Directors: Ed Webb and Eric Long. Terry King made a motion, which passed, that nominations cease.</p> <p>Dan Collins made a challenge to club members to help reduce the mortgage. He will match ==></p>	<p>At the April 14 Executive Committee Meeting, it was voted that all proceeds from surplus asset sales at the regular monthly meetings will be used to help reduce the building mortgage. (See "Mortgage Retirement Effort Being Made" elsewhere in the newsletter.) Last month, club members purchased about \$600 worth of surplus assets.</p> <p>Phil Clough died on April 4 and willed to the club all of his model railroad rolling stock, locomotives, and supplies. Many of his donations will be available at the monthly meeting on May 19. Club members will have the first chance to purchase a wide variety of rolling stock, steam locomotives, and structures which were removed from his layout. Phil was an avid Pennsylvania Railroad fan and had a large collection of coal cars similar to those still used today on coal trains in Pennsylvania.</p> <p>Do you need paints for air brushing your equipment? As a result of Phil's other hobby of modeling ships, we now have hundreds of bottles of different paints Phil used in his many projects. They will be available for club members to have first choice before they are offered at train shows.</p> <p>Remember, money received from these sales is doubled by the matching challenge put forth by one of our club members. Therefore, last month's \$600 really amounts to \$1,200 off the mortgage. Come to the May 19 meeting, add items to your collection, and help reduce the mortgage even more at the same time.</p> <hr/> <p>donations by any four club members who donate \$500 each. One donation of \$500 has already been received from a member. Three more are needed to complete the challenge. July 4, Independence Day, has been selected as the final date for the match. As of April, the mortgage is approximately \$96,000.</p> <p>Terry King reported that 92 tables have been sold for the train show at Mt. Ararat on April 30. He requested that someone with a Smart Phone volunteer to have the "square" added to their phone so that they can help Terry with credit card sales during train shows.</p> <p>Paul Lodge presented several sign-up sheets for members to sign to help with duties and responsibilities at the club house as well as for events and train shows.</p> <p>The 50/50 Raffle was won by Bob Willard. Jamie Robinson and Rick James won the attendance prizes and selected books which were available from the library's collection.</p> <p>The meeting adjourned.</p> <p style="text-align: right;">- Paul Lodge</p>	<p>Long-time club member Phil Clough, 90, passed away on April 4, 2016, after a battle with diabetes and kidney disease. Phil was profiled in a "Meet the Members" column in July 2015.</p> <p>Phil Clough grew up outside Boston. He was drafted into the Army in 1944 and worked on a high velocity anti-tank destroyer, arriving in Germany just after the Battle of the Bulge. After serving two years in the Army, he graduated from Yale University and taught geology for 36 years in Lake Placid, New York. He also coached swimming, soccer, and lacrosse. Phil was an avid outdoorsman who enjoyed hiking and outdoor sports. For 53 years he worked at Camp Winona, a boys camp in Bridgton, during July and August. He taught riflery and led campers on mountain hiking trails.</p> <div data-bbox="1109 814 1279 993">  </div> <p>After one of his former campers began teaching at Hebron Academy, Phil became a mainstay at Hebron Academy, where teams adopted him as a mascot. He was loyal to the Academy's soccer, lacrosse, and hockey teams and attended most of their games, even traveling with them on the team bus. As a youngster, Phil modeled ships and planes and liked working with balsa wood. In recent years he spent more time building model ships than working on his railroad layout. Phil was a rail fan who enjoyed watching trains, particularly in the scenic areas of Altoona's Horseshoe Curve.</p> <p>Phil moved to Bridgton in 1996 and joined the Great Falls Model Railroad Club the following year. He took our Model Railroad class and built an HO layout in his home. When the club acquired our current building, Phil donated the specially-built prefabricated benchwork now used for the N-Scale Division layout. He attended as many of our functions as he could and always brought the test track to be sure locomotives ran properly before people bought them. As a member of Operation Lifesaver Phil presented many railroad safety programs for driver education classes in Bridgton.</p> <p>Phil had asked that his entire collection of model railroad locomotives, rolling stock, and structures be donated to the club. He also donated his collection of books, magazines, and VHS and DVD tapes about trains. Many items from his collection will be available for sale at the club's annual meeting on May 19.</p> <p>We will miss Phil at our meetings and at the test track when we have our train shows. Thanks, Phil, for being such a loyal and dependable member of the Great Falls Model Railroad Club.</p>

Thunder decided to use his son's Legos to memorialize his life. Spending the hours with his son's Legos got him hooked, and he spent ten years creating a Lego train layout that included a mountain, many buildings and switches.

The expense of Legos is what turned his interest to the HO model train hobby.

Tami will be interviewing club members for this monthly "Meet the Members" column.

She looks forward to having you talk with her and tell her your story.

Check out our Facebook page

at:

Great Falls Model Railroad Club

MEET THE MEMBERS

WhiteThunder McBride

Whitethunder McBride has been a member of the Great Falls Model Railroad Club for about a month. Before he retired from Schott Fiber Optics in Marlboro, MA, for health reasons, he was the plant manager and the Head of Engineering. His wife Neva of three years just recently moved to Maine from Massachusetts. Neva found her commute to work in Boston very difficult and decided that a job in "Vacationland" would take a little bit of stress out of their lives. They now live in Augusta with their six rescued rabbits.

As a child, Thunder was interested in HO trains but did not pursue this hobby until recently. His interest in trains started with Legos. His 11-year-old son suffered from cancer and spent many hours enjoying his Legos. When his son passed away, Thunder decided to use his son's Legos to memorialize his life. Spending the hours with his son's Legos got him hooked, and he spent ten years creating a Lego train layout that included a mountain, many buildings and switches. The expense of Legos is what turned his interest to the HO model train hobby.



Thunder attended our Mt. Ararat Show in the fall of 2015 and picked up our flyers. He signed up for our Adult Education Model Railroad Class, and his wife Neva took the Backdrop Painting for the Reluctant Painter class with him. In the Adult Ed class he created a layout with a tunnel and the first Great Falls Model Club Railroad Radio Station. His orange guard rails are very eye-catching. His module was included in the club's layout at the April Mt. Ararat Train Show, and he assisted with the show.

At home Thunder has created a 4 x 8 layout that he is sure will be expanding. This layout includes a mountain with inclines and declines. It has an industrial area and a town. He wants to add a turntable, which will increase the size of his town.

While Thunder is working on his trains, his wife Neva spends her time creating doll houses and the furniture that goes in them. Thunder has created a work area and work bench where Neva can pursue her hobby.

Thunder is a very interesting man with many hobbies. At this time Thunder and his wife are involved with many Native American Pow Wows. At many of the Pow Wows he is an announcer, singer, drummer and dancer. He has also facilitated many sacred ceremonies and creates Native American crafts from leather and stone. Having retired due to health issues, Thunder has had the opportunity to visit schools to teach students the culture of the Native American. Although his

tribal connection is not certain, he believes it is Micmac. He is what is known as a "Metis" (part Indian and part French). His wife is Iroquois and Delaware.



Together, Neva and Thunder raise their six rescued rabbits. Thunder has always been interested in rescuing animals. He had three Great Danes at one time and two huskies at another time. Thunder's other interests include body building, which he had to give up because of his health. He was also a semi-professional bowler, and he played tenor sax for a rhythm and blues band.

Welcome to our club, Thunder. We are happy to have you join us.

By Tami Paine

TIP OF THE MONTH By Paul Dugas



"Improving Spray from Aerosol Spray Cans"

If you are going to use "canned spray paint," you can improve the nozzle spray flow by partially immersing the can about half way in hot tap water (approx. 100 degrees) for about ten minutes before spraying. Remove from the water and spray the model. The spray from the nozzle will be finer than if not warmed.

Degree of Difficulty:

1 (Difficulty Scale: 1-easy to 10-most difficult)

MORTGAGE RETIREMENT
DRIVE EFFORT in FULL FORCE

The club is making an effort to pay off the \$96,000 mortgage remaining on the clubhouse. The club's mortgage is currently in **Jerry Johnston's** name. He is offering to pay half of that if the club will contribute the other half. The goal is to reduce the mortgage enough to obtain a bank loan with the club named as the borrower instead of keeping the loan in Jerry's name.

An anonymous matching challenge of \$10,000 was made by one club member to help reduce the mortgage by \$20,000. At the Executive Committee meeting on April 14, **Dan Collins** presented another challenge. He will match four \$500 donations toward the mortgage from four individual club members. This would equal another \$4,000.

A motion was made, and accepted, that all surplus inventory sales made during the regular monthly club meetings be used towards the \$10,000 matching challenge. At the April meeting, approximately \$600 was received from sales.

If you are in a position to make a contribution and wish to help reduce the mortgage, please contact **Treasurer Owen Buck (207-337-2872)**. With the matching challenge, every dollar donated is worth two dollars.

It was suggested that July 4th, Independence Day, be selected as the target date for the matching donation challenges and the mortgage reduction effort. That date would also make this the club's Independence Day and would reduce our dependence on one club member.

Thank you, Jerry, for your amazing offer to help the club prosper into the future by eliminating this major expense for our outstanding organization.

By Paul Lodge

Modelers Forum

On the fourth Thursday of each month from 7 p.m., members of the Great Falls Model Railroad Club meet to share modeling techniques and ideas. Future newsletters will have a "Tip of the Month" submitted by club members who want to share their modeling experiences. All club members are invited to come and learn or share their modeling skills. New model railroaders as well as those with many years of experience have participated in the Modelers Forum.

At the May 26 Forum, fourteen club members shared some outstanding modeling tips and ideas. Some of the presentations will be used as part of the clinic portion of our monthly meetings.

To learn more about Wally Chase and his influence on model railroading in the Lewiston/Auburn area, see the February issue of The Signal.

By Paul Lodge

The First Modern Organizational Chart Is a Thing of Beauty
New York and Erie Railroad (1855)

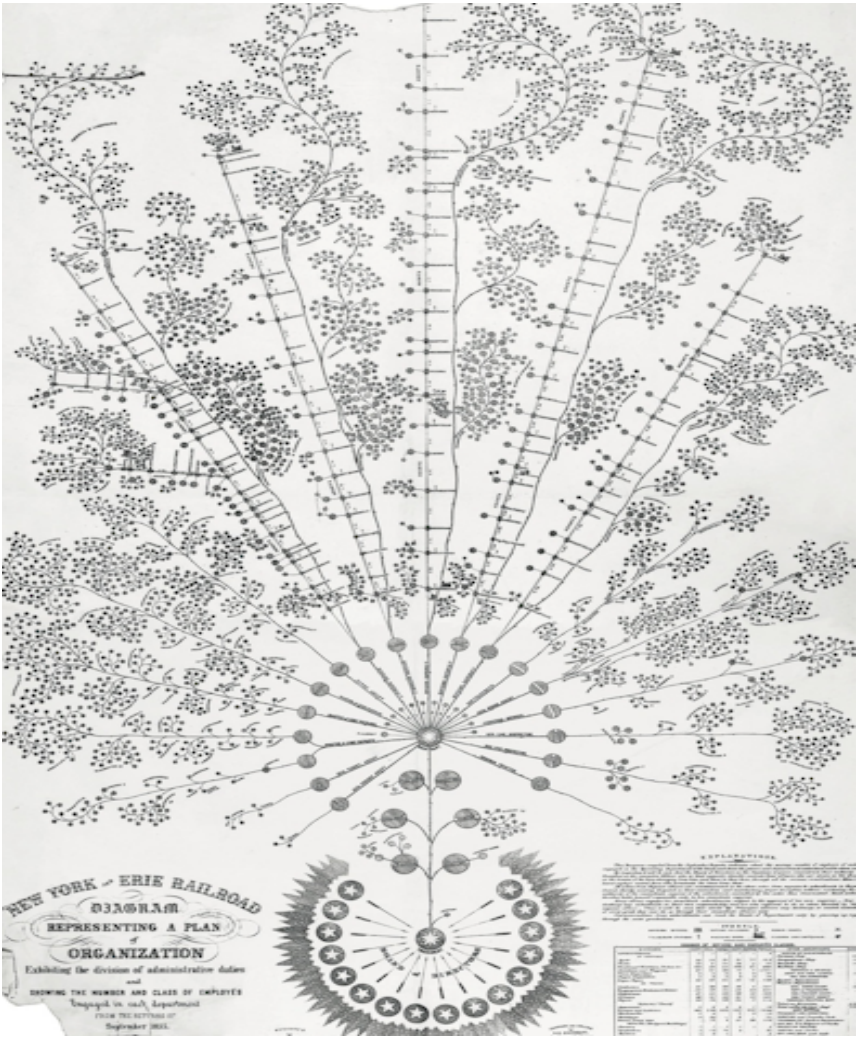
With this 1855 chart, Daniel McCallum, general superintendent of the New York and Erie Railroad, tried to define an organizational structure that would allow management of a business that was becoming unwieldy in its size. The document is generally recognized to be the first formal organizational chart.

Historian Caitlin Rosenthal, writing in the McKinsey Quarterly, points out that the chart was a way for McCallum to get a handle on a complex system made more confusing by the new availability of data from the use of the telegraph (invented in 1844). Information about problems down the track was important to have—it could help prevent train wrecks and further delays—but the New York and Erie's personnel didn't have a good sense of who was in charge of managing this data and putting it into action.

The chart put daily responsibilities in the hands of the divisional superintendents of the railroad's lines. The superintendents, in turn, had to provide McCallum and the central office with reports on their operations. Rosenthal writes: "McCallum ... designed a system of hourly, daily, and monthly reports that enabled him to calculate practical metrics, such as cost per ton-mile and average load per car." The railroad's board would use this data to improve operations.

Besides being historically significant, the chart is beautiful to regard. Designed by McCallum and drafted by G.H. Henshaw, a civil engineer, the chart draws from the natural motifs popular in the Victorian aesthetic. Looked at from afar, the whole resembles a tree laden with fruit or blossoms. Up close, the individual "branches" illustrating groups of employees who worked on the trains have the rough, natural look of vines, twining alongside the straight lines of the tracks that they service.

See Nick Mamich for a downloadable print of this 1855 New York and Erie Org Chart



The Great Falls Model Railroad Club (GFMRRC)

Contact Info:

144 Mill Street
Auburn, Me 04210
Phone: 207-933-2477
E-Mail :

Virtual Address

<http://www.greatfallsmodelrrclub.org>
See us on Facebook!
Great Falls Model Railroad Club

An educational foundation



OFFICERS

President:

Jay Calnan-783-1719
jaycalnan@outlook.com

Vice President:

Roger Plummer-740-0776

Secretary:

Paul Lodge - 966-3641
paulodge@zwi.net

Treasurer:

Tom Coulombe - 240-9913
ctcoulombe@aol.com

Directors:

Roger Allen - 783-2129
allenroger234@gmail.com
Dan Collins - 865-2222
dcnotta@hotmail.com
Darin Long - 782-3652
mecgp38261@zwi.net

Librarian/Archivist:

Terry King-576-3788
greatfallsmodelrailroadclub@yahoo.com

Webmaster:

Joe Marshall - 344-7099
joe@braintriggers.com

Assistant Webmaster:

Frances Lodge - 966-3641
paulodge@zwi.net

The Signal

The Signal is published twelve times per year by The Great Falls Model Railroad Club.

Copyright © 2010-2016

Editor:

Nicholas Mamich

Correspondent/Secretary:

Please email all articles to:
Paul Lodge paulodge@zwi.net

GFMRRC Special Events May 2016

Subject to change
Please consult our web site or Facebook page

May 7 - 9:00 AM to noon

SPECIAL G-Gauge Operating Session
All GFMRRC members welcome

May 7 - 8:00 AM to noon

HO Operating Session

May 7 - noon to 1:00 PM

Future Master Model Railroaders

May 14 - 8:00 AM to noon

HO Operating Session

May 19 - 6:45 pm

Election of officers for the coming year During Regular meeting

May 21 - 10 AM to 3 PM

HOB0 HOLIDAY at GFMRRC
Dress for success!

May 28 - 8 AM to noon

HO Operating Session
SPECIAL DATE because of Hobo Holiday last week

GFMRRC Future Special Events

Subject to change
Please consult next Signal Issue, or
our web site or Facebook page

August 20

Train Fest during L/A Balloon Festival

September 7th -10th

36th Narrow Gauge Convention
Augusta Civic Center
For details, see www.nngc2016.com



GFMRRC Recurrent Activities May 2016

Subject to change
Please consult our web site or Facebook page

1st Thursday of each month - 4-8 PM

Family Night at Governor's Restaurant
Experience operating trains with good food
1185 Lisbon St, Lewiston, ME 04240
Help needed - Contact Paul Lodge
paulodge@zwi.net

2nd Thursday of each month - 6:30 PM

Executive Committee Meeting

3rd Thursday of each month - 6:45 PM

Regular Monthly Club Meeting

Is anybody interested in having dinner before the Regular club meetings? Please email
greatfallsmodelrailroadclub@yahoo.com

4th Thursday of each month - 7 PM

Modelers Forum

Tuesday mornings - 9:00 to 11:00 AM.

Retired Renovators meet to restore railroad equipment and buildings donated to the club. This helps to sell excess inventory at higher prices. If you would like to help, come whenever you can.

HO Work Sessions

When no Operating Sessions or Special Events (see column to left) are scheduled :
- Every Saturday 8:00 AM to noon
- Every Wednesday 6:00 - 8:00 PM



Aspiring Hobos
waiting to hop the next train
to Hobo Holiday!
May 21—10 am to 3 pm
Don't miss this train event!