

Member since June 1988

NEXT MEETING
May 20, 2021
6:30 p.m.

**Have a story
you want to
share?**

**Send it to the
Editor today
and you may
be published!**

**Bring a friend to our next
meeting.**

DO YOU WANT TO WIN?

Attendance & 50/50 prizes are drawn at every Meeting, on the 3rd Thursday of the month.

**YOU HAVE TO BE
PRESENT TO WIN!**

DONATIONS

Bottles for Basics:

- ♦ 2020- \$484.00
- ♦ March— \$33.00
- ♦ April—\$55.00

When you send an article with pictures, please do not embed them into the article. Please send them as a separate file. This way we can lower the number of MP's. This way we can send the Signal as one file.

THE SIGNAL



THE GREAT FALLS MODEL RAILROAD CLUB

VOLUME 25. ISSUE 5

MAY 2021

ANNUAL MEETING, MAY 20

By Paul Lodge

The Great Falls Model Railroad Club has been going through an unusual time with the COVID-19 pandemic restrictions on the size of gatherings and the closing of the club to non-members. Because we were unable to hold our regular business meeting and election of officers last May, the members of the Executive Committee kept the same offices from May 2019 to May 2021. Circumstances have changed, but not by much. Vaccinations have been going well, but people are still hesitant to socialize and paid membership has declined.

In order to get a fresh start, Paul and Frances Lodge were asked to be the Nominating Committee for the 2021-2022 club officers. Most members of the Executive Committee have agreed to continue in their current roles. Having been Secretary for many years, Paul Lodge has declined to serve as Secretary again, and Tami Paine is being nominated for

that position.

May 20 is the date for the annual meeting, at which time officers will be elected. As of May 1, the Nominating Committee presents the following slate of officers for 2021-2022: President, Mike Meserve; Vice President, Jamie Robinson; Secretary, Tami Paine; Treasurer, Owen Buck; Librarian/Archivist, George Pitchard; Directors (Pick 3) Rick James, Darin Long, Eric Long.

Additional names can still be added to the ballot. If you would like to be considered for an office, or if you would like to nominate someone else for an office; please contact Paul Lodge by Wednesday, May 12, so that names can be added to the election ballot before the meeting. 207-966-3641 or paul lodge@gwi.net

NOMINATIONS FOR OFFICERS

At the Great Falls Model Railroad Club's annual meeting on May 20, members of the club will elect officers for the 2021 through 2022 year. The Nominating Committee has submitted the following list of names from which officers will be elected at the May meeting. If they are elected, the following people have agreed to serve as officers for the coming year:

President: Mike Meserve

Vice President: Jamie Robinson

Secretary: Tami Paine

Treasurer: Owen Buck

Librarian / Archivist: George Pitchard

Directors: (Vote for 3)
Darin Long
Eric Long
Rick James

Additional nominations can be made at the May meeting.

G-GAUGE UPDATE

By Dick Clark and Ray Parent

The G-Gauge Crew of the Great Falls Model Railroad Club has had two work sessions during the past month. Dick Clark, one of the six members who attended the work sessions, wrote most of the following article.

The second work session was my first time back to the club house since March of 2020. Wow! A lot had happened to the G-Gauge layout. What I mean is that a lot of dust bunnies had invaded the layout and left dust all over the layout, causing engines to run sluggishly or not at all until cleaned. Thank goodness for track-cleaning cars.

At the same time the electrical kilowatts made some changes in the low voltage electrical system, causing a power loss in Number 2 Loop and not letting engines on # 2 Loop run at full power.

After a lot of persistence and brain power coming together, we were able to get all five loops cleaned and operating without the dust bunnies and the uncontrolled kilowatts interfering with our operations.

Yahoo! After much work, especially on Loops 2 and 3, we are up and running and ready for operations on the G-Gauge layout.

Although there were six members of the G-Gauge Crew at the work sessions, no pictures were taken as everyone was too busy. And yes, we all wore our masks, making communicating with each other interesting.

HOBO HOLIDAY PICTURES



HOBO HOLIDAY MEMORIES

Hobo Holiday was an annual event held in May at the Great Falls Model Railroad Club from 2012 to 2017. Jerry Johnston (nicknamed Hobo) developed a handout which explained hobo culture, folklore, and traditions and included a chart of symbols that hobos used to communicate with each other. A scavenger hunt to find these symbols encouraged visitors to see all of the model railroad layouts and to enter the library. Jerry also created "Hobo Stew" which was offered to our guests.

Railroads are private property and hobos rode the trains illegally. Because the railroad club does not want to encourage trespassing on railroad property, there was a Railroad Safety Quiz. Operation Lifesaver railroad safety posters throughout the building displayed information with the answers. Those who answered all questions correctly could enter their names for a drawing for a gift certificate from Governor's Restaurant or a chance to ride on one of Maine's participating tourist railroads. At the Hobo Holiday each year, Operation Lifesaver provided railroad safety tips and materials, including coloring books and activity books to give to the children.

On Saturday, May 12, 2012, the Great Falls Model Railroad Club celebrated National Train Day with our first Hobo Holiday. Club members and visitors were encouraged to come dressed as hobos. Dressing like a hobo or railroad engineer was optional for this family fun event which featured temporary and permanent train layouts, a scavenger hunt, and railroad games.

Hobo Holiday was an opportunity for the public to learn about a fascinating aspect of railroad history while enjoying model railroad displays and participating in various activities. Hobo symbols telling other hobos about potential dangers and about places where they were welcome or could find help were placed at strategic locations throughout the building for the scavenger hunt. Children could run trains on the club's permanent HO layout and fish for prizes in a special fish pond. In 2012 and 2013 parents and older children had an opportunity to practice railroad switching maneuvers with the club's *Timesaver* layouts, moving railroad cars to prescribed destinations.

On Saturday, May 17, 2014, the Great Falls Model Railroad Club held its third annual Hobo Holiday. This was the first Hobo Holiday at which younger children were introduced to the Thomas the Tank Engine layout in the G-Gauge room. In the large meeting room, a special rug defined the play area with age-appropriate trains for the youngest visitors. Paul Lodge had designed and built two new games, *Hoop a Caboose* and *Roundhouse Roulette*. Dick Clark, who had built the "bridge" used for the fishing pond at every Hobo Holiday, helped to create a device for the *Roundhouse Roulette* that would spin without always stopping at the same place. This was the first year that the term Guest Engineers was used to identify the older children who were running trains on the club's permanent HO layout. Another innovation in 2017 was the portable Brio layout designed at a young child's height.

Hobo Bucks were used in 2016 and 2017 instead of tickets for games and guest engineers at a cost of \$1 each or 7 for \$5. Hobo Holiday admission from 2012 to 2017 remained at \$3, with children 12 and under admitted free.

Although the basic format for the Hobo Holiday remained the same, guests looked forward each year to seeing the changes in the permanent layouts as they were expanded and new details were added. These special events often provided motivation for railroad club members to complete new scenery or other features on the layouts.



MODELERS FORUM

By Kent Waterson

The slimmed-down version of the Modeler's Forum met on Thursday, April 22, with what proved to be a "vehicle" theme for the evening. Braving the high winds that night were Roger Plummer, George Pitchard, Kent Waterson, Jamie Robinson, Larry Cannon and Dick Holman.

Roger opened up the evening with a collection of tank trailers. Roger explained that the project started when his brother asked for some vehicles on his layout, the one requirement being that the vehicles must roll (no static models). After Roger built a Herpa Elliptical Tank trailer (with two axles), his brother asked: "Can you build one with three axles?" Roger then described his procedure for making the modifications, including lengthening the fenders and axle mounts, moving a ladder, and most impressively, the articulation of the three axles. Roger also showed a pair of logging trucks with similar modifications to the axles. Each truck started as a dump truck, with the logging racks made from brass stock (soldered together by Jamie).

George then gave an update on a project he was working on (but did not bring), another 3-foot conversion.

Kent was up next with a new circle cutting tool he recently purchased. The tool is a very high-quality tool from Dspiae (dspiae.com) made for cutting out circles in the range from 1mm to 50mm.

Kent also brought an older Modeler's Forum project. A few years ago, the Forum sponsored an "Outhouse" contest, in which modelers were asked to create a scene using an outhouse, the size of which would be based on the scale in which it was created. In this case, the outhouse was O-Scale and 4" x 4". The unique feature of this outhouse was that it included audio. (Yes, your imagination is probably correct!) The problem was that the volume was too soft. To correct the issue, a new speaker enclosure was 3D printed, and a 2.5w amplifier was added. Volume was then sufficient to produce a few laughs!

Jamie followed, showing an O-Scale Willy's Jeep kit he had purchased on eBay. The kit appeared to be a nice, simple kit with a very reasonable (\$6.07) price.

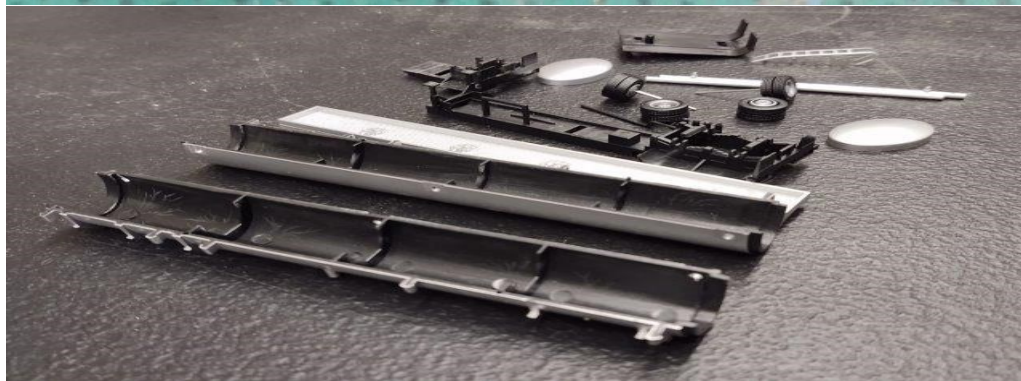
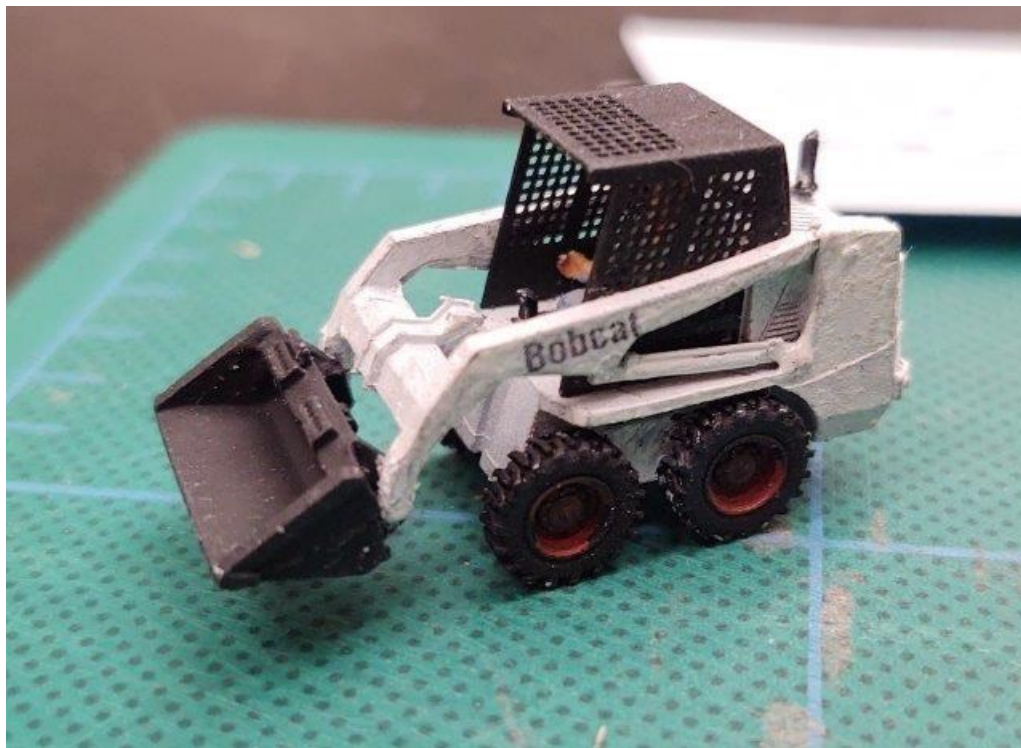
Larry then presented a variety of small projects he had been working on. First up was a collection of brass fire extinguishers (needed for a maintenance shed) that he had made from a leftover Tichy parts sprue. He also showed a collection of 55-gallon barrels, painted and then decaled with home-printed decals. Continuing with the "vehicle" theme, Larry then showed a pair of trucks for hauling coal at his Fairbanks Scale Co. complex. Larry added plow mounts and again custom-printed decals. Lastly, he showed a HO scale Bobcat from GHQ.

Closing out the evening was a short comment from Dick regarding a book he happened to pick up while walking into the club that evening. The book was an older layout design book and was the book he used to build his first layout as a kid.

The evening wrapped up about 8:15. An interesting collection of models and skills made for an enjoyable evening. We never know exactly what will show up! Come join us as we will be back again next month, May 27. Also keep an eye out for the upcoming business meeting on May 20. The club is only as good as the people who participate, so come and let your voices be heard.



MODELERS FORUM PICTURES



EMC RR (part 4) EASTERN MOUNTAIN COASTLINE RAILROAD

By James Long

In earlier issues of *The Signal*, readers have been introduced to the Eastern Mountain Coastline Railroad (EMC), the fictitious railroad that my son Darin, my brother Bob and I began in 2001 and work on as time permits. EMC owns and operates the Selkirk Yard and the full servicing facility. Trains come into the huge Selkirk Yard, where freight is broken up and sorted for delivery by EMC to Jersey Central, to and from the paper mill at Linden, and serving the railroad barge on the Hudson River.

Bob Long has been coming up to make rock castings and to paint the backdrops on the "plywood canvas." He is doing a great job. I did not know he could paint scenery that looked so beautiful.

We recently started on an area in New Jersey where I decided to put a large viaduct around the "Horseshoe Curve."

I was watching TV awhile ago and saw a large viaduct in Switzerland with a train traveling across it. It looked really good, and I knew exactly where I could put it and make it fit into the landscape and track that were already in place. When Darin and I designed the track plan, we separated areas from one to another, so it looked as if the train had traveled a long distance between station stops or industries. We included elevations for a chance to have bridges over roads or tracks or waterways. The plan has worked very well, and I think it will continue to work well as we add scenery. We have put in a few spurs as needed that were not in the original plan, but real trains add spurs as industries demand.

On the New York side of the peninsula is the Hudson River with the train barge loading/unloading area. Darin said the Hudson is a tide river, so it has to move up and down with the tides. Another thing to build into the scenery! But realism is what we are trying to achieve, so it looks proper now. The river disappears around the corner and reappears in New Jersey, coming into the area where the viaduct and four bridges are located.

This part of the layout was all solid benchwork from the initial building and laying of track. Out came the hand saws and carpentry tools to make an opening for the waterfall and the bridges. Creating a waterfall and dropping the river bottom down below the bottom of the bench work allowed four bridges to go across the river.

This gave us room enough to put in the Retention Pond into which the logs can be dumped from the log cars, shipping full-length logs for the sawmill. The steel bar in the photos represents the ramp to haul the logs up out of the pond and into the mill. I was fortunate to pick up a complete set of Walther's sawmill buildings, depicting the process for an actual log from sawing to drying and then to planing.

This leads to the local lumber yard retail sales area about a mile down the road, serving a city in New Jersey, and to the paper mill at Linden. The Linden Meyer Munroe Paper Company, which is the major industry in the town of Linden, is based on Linden Meyer and Monroe, a real paper company in Massachusetts. (A customer who was a friend of mine was a

salesman there, and his father and uncle owned the company until they died. Peter and his brother sold the company and retired to Maine.) From the lumber mill along its route, EMC hauls in wood chips and sawdust for the paper digester. It also delivers tank cars of various chemicals and clay slurry to support the paper-making process of finished paper for magazines. Box cars take the finished paper from the paper company to other locations along the EMC route.

The attached photos show how progress was made with the viaduct, the bridges, and the sawmill.



(Continued on page 7)





THE GREAT FALLS MODEL RAILROAD CLUB

144 Mill Street
Auburn, Me 04210

<http://www.greatfallsmodelrrclub.org>

Facebook: Great Falls Model Railroad Club

An Educational Foundation

OFFICERS:

President:
Mike Meserve
574-1476
YZF250mike@yahoo.com
Vice President:
Jamie Robinson
Jamie@westriverllc.com
212-6027

Secretary:
Paul Lodge - 966-3641
paul lodge@gwi.net

Treasurer:
Owen Buck, 485-9736
obuck61@hotmail.com

Librarian/Archivist
George Pitchard, 330-9860
greatfallsmodelrailroad-club@yahoo.com

Directors:
Rick James, 740-1266
Darin Long, 782-3652
Eric Long, 754-4493

Webmaster:
Joe Marshall - 751-0554
braintriggers@gmail.com

Assistant Webmaster:
Jamie Robinson - 225-3420
Jamie@westriverllc.com

Social Media Editor
Tami Paine, 595-4668
Tami.girardin@yahoo.com

THE SIGNAL

The *Signal* is published twelve times per year by The Great Falls Model Railroad Club.

Copyright May 2021

Editor
Terry King
207-576-3788
terrenceking112@yahoo.com

Proofreader:
Frances Lodge
966-3641
paul lodge@gwi.net

Address Change

If your mailing or e-mail address changes please notify
Paul Lodge at
paul lodge@gwi.net

www.greatfallsmodelrrclub.org

Upcoming Events



Recurrent Activities

Please check our web site on Facebook.



Summer is here.
Time to get your
Great Falls
Tee-shirts.

Pick them up at
the meeting or call
Paul Lodge to
arrange pick-up.



Operating Sessions

NONE UNTIL FURTHER NOTICE

Regular Monthly Meeting

May 20th, 6:45 p.m.

ELECTIONS

Spikey's Station

NONE UNTIL FURTHER NOTICE

Work Session

Every Wed. night—6:00 p.m.—8:00 p.m.

Every Sat. 9:00 to Noon

Modelers Forum

May 27, 7:00 p.m.

Executive Committee:

?