

2021 O Scale National Convention

Denver, Colorado

Friday, June 18 to
Saturday, June 19, 2021

David Stewart had his Appalachian & Ohio layout open for visitors on Thursday evening!

- David's layout features a fully functioning CTC panel and working signals
- It has a reasonably long mainline run
- There is some great scenery in place
- The layout is 100% handlaid track
- It is operated with NCE DCC and features sound-equipped locomotives



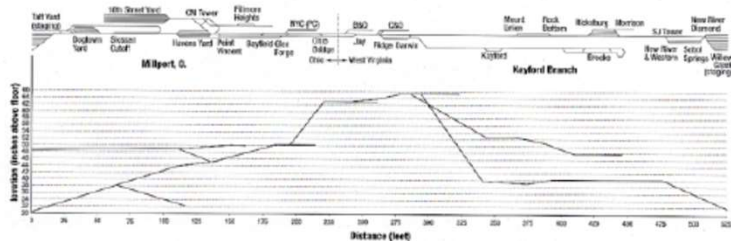
LOWER LEVEL STAGING YARD



UPPER MAIN LEVEL



The Appalachian & Ohio Railroad



LAYOUT FACTS
 DESIGN & TRACK PLAN DRAFTING BY:
 DAVID STEWART (OWNER & CREATOR)
 CREATED / DRAWN: 1987
 SCALE: 1" = 100' (TWO RAIL SCALE 1:48)
 MINIMUM RADIUS:
 MAINLINE 80', BRANCH LINE 40'
 MAJOR & BRANCH RAILROADS:
 CONTINUOUS - 62"
 KAYFORD - 18"
 FILLMORE HTS. - 78"
 MAXIMUM GRADES:
 RIVER GRADE - 3.5% (28")
 COAL RIDGE GRADE - 3.75% (29")



DS & CTC Panel













The A&O features a hump yard with working retarders!

There are two sets of retarders, both controlled by the hump operator.











All too soon, the evening was over, so back to the hotel. I left my house at 0230 (Eastern time), and wrapped up the evening about 2300 (Mountain time)...

The show opened at 0900 Friday morning.

I spend some time at a small trolley layout. It was brought up from Dallas for the Convention. Okay, I like trolleys. Always have.

It was built as a trolley layout, then morphed into a diesel powered switching layout with the overhead removed.

New interested operators reinstalled the overhead and it's a trolley layout once again. Old school – DC power from the overhead wires. I love it!























There were some empty dealer tables (no-shows), and there were some folks that had made reservations and chose not to attend, but for those of us that were there, it was a great time and some wonderful deals could be had.

It's always great to see old train show friends, put names to familiar faces, and make new friends. And yes, even I have friends!





The Longmont, Terminal & Northern sectional layout was there.

This is a well detailed O Scale two-rail layout built in sections for transportability.

It is operated with NCE DCC and features sound equipped locomotives.

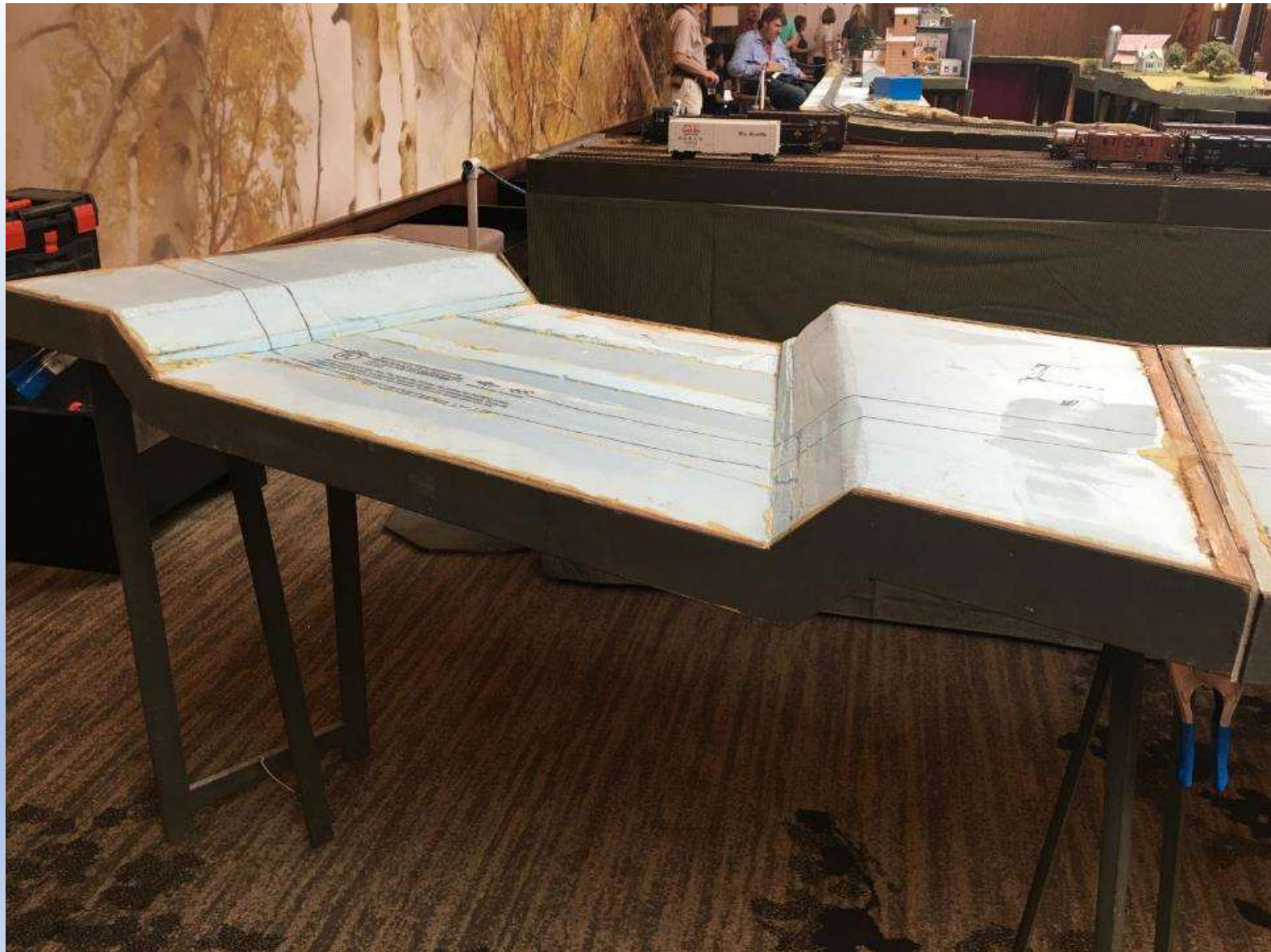






















Longmont Terminal and Northern Railroad

A modular/sectional layout designed to be portable for display at train shows.

This model railroad is meant to represent a small shortline operation during the steam/diesel transition era.

Construction is based on an aluminum core with shortline operation during the steam/diesel transition era.



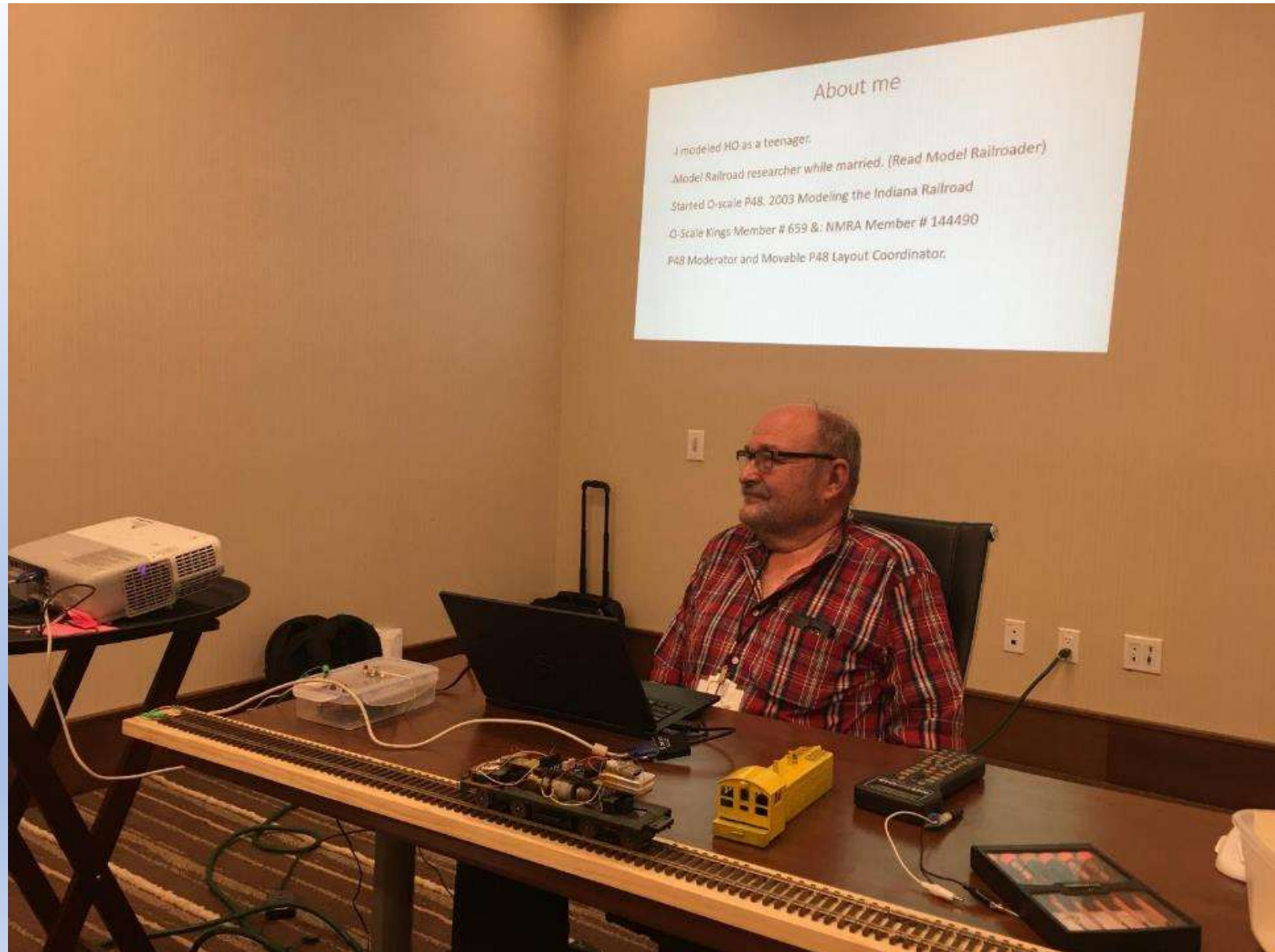
Nick
Bulgarino
gave a clinic
about how
he got
started in
OS2R –
Beginning in
O Scale on a
budget



Eric Peterson spoke about how he designed his layout for moves (and survived them!)



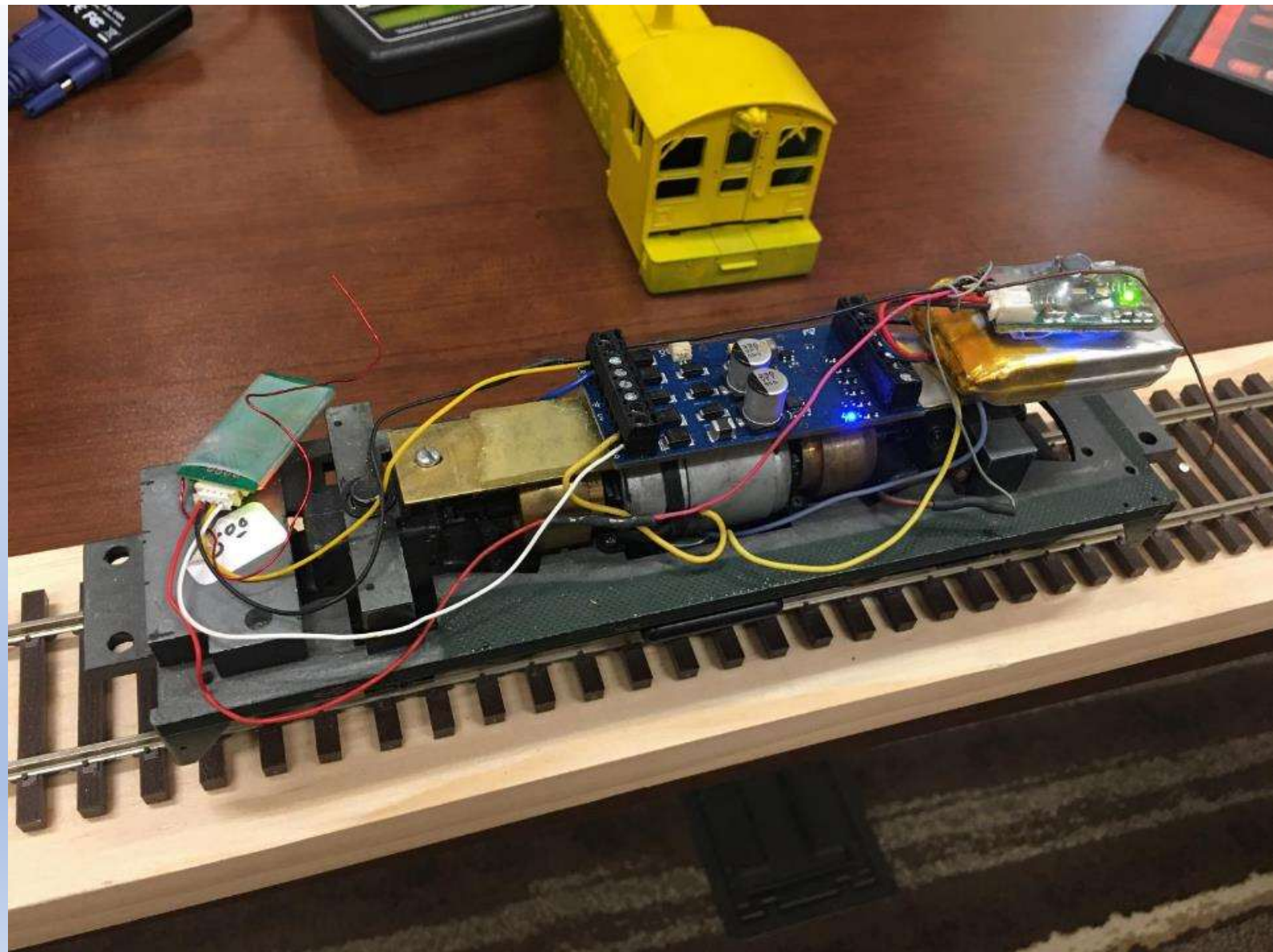
Paul Hanson
demon-
strated the
virtues of
Dead Rail
(and got me
thinking
about it!)



There was a lot of interest in the Dead Rail clinic!



Doesn't look like much in this shot, but it all fits inside that switcher body!



Carey Williams brought some vintage equipment from his collection in Chicago. This was Frank Ellison's!



Live steam
in O Scale!



Roy Asuley 1928-30
— LIVE STEAM —
SOLD THROUGH ALAMEN
ORIGINAL
PRICE \$225.00

**Show & Tell
Table**
(Not For Sale)

Back to the
trolley layout!
That's Jim
DeBruin who
writes the O
Scale
Archaeology
column for O
Scale Trains
magazine.







David Stewart was the featured speaker at the banquet and gave a detailed presentation about the philosophy and back story behind the Appalachian and Ohio.





The O Scale
Kings
meeting
kicked off at
0700
Saturday
with
President
Vaughn in
the hot seat



The hardy
souls who
braved the
early hour
and the
awful
coffee...



Joseph
Schultz
demon-
strated
construction
of a P48
turnout
using parts
from Right-
O-Way
Products



There were some beauties in the Model Contest! Check the July/August 2021 edition of the [O Scale Resource](#) for the winners.





O Scale National Convention Denver 2021

<p>1. Construction (Maximum 40 points)</p> <p>Submit for construction that has been done from your model. Describe how you built your model and include a copy of the construction manual and quality report. Describe the construction of the model and include a copy of the construction manual and quality report. Describe the construction of the model and include a copy of the construction manual and quality report.</p>		<p>Points Awarded</p> <p>SEE ATTACHED SHEET</p>
<p>2. Detail (Maximum 20 points)</p> <p>Describe the detail of the model and include a copy of the detail report. Describe the detail of the model and include a copy of the detail report. Describe the detail of the model and include a copy of the detail report.</p>		<p>Points Awarded</p> <p>SEE ATTACHED SHEET</p>
<p>3. Conformity (Maximum 25 points)</p> <p>Describe how your model conforms to a prototype. Include prototype documentation other than supplied with kit.</p>		<p>Points Awarded</p> <p>SEE ATTACHED SHEET</p>
<p>4. Finish & Lettering (Maximum 25 points)</p> <p>Weathered <input checked="" type="checkbox"/> Hand Lettered <input checked="" type="checkbox"/> Decals <input checked="" type="checkbox"/> Transfers <input checked="" type="checkbox"/> Spray <input checked="" type="checkbox"/> Airbrush <input checked="" type="checkbox"/> Dry brush <input checked="" type="checkbox"/> Seal <input checked="" type="checkbox"/> New weathered <input checked="" type="checkbox"/> Describe methods and materials <input checked="" type="checkbox"/> SEE ATTACHED SHEET</p>		<p>Points Awarded</p> <p>SEE ATTACHED SHEET</p>
<p>5. Scratch Built (Maximum 15 points)</p> <p>List all parts scratch built and note special refinements.</p>		<p>Points Awarded</p> <p>SEE ATTACHED SHEET</p>
<p>6. Total Points (Judges only here)</p> <p>Tabulated by _____ Verified by _____ Total Points _____</p>		

Entry #

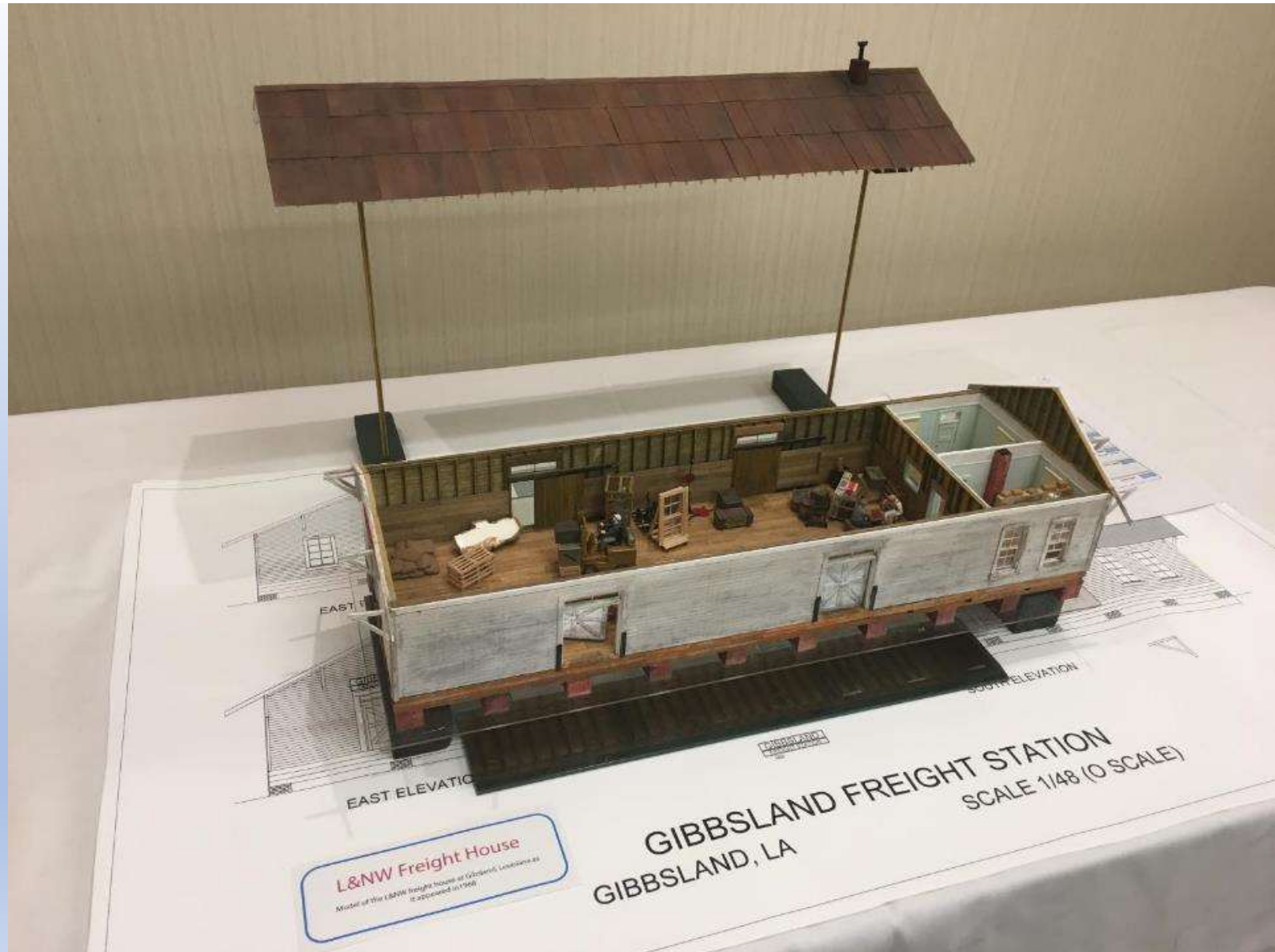


Cradle to Grave Diorama

Diorama depicting the construction of a new logging car set
another car that was used in the 1940s (see the
loading crew dropped a log on the car)

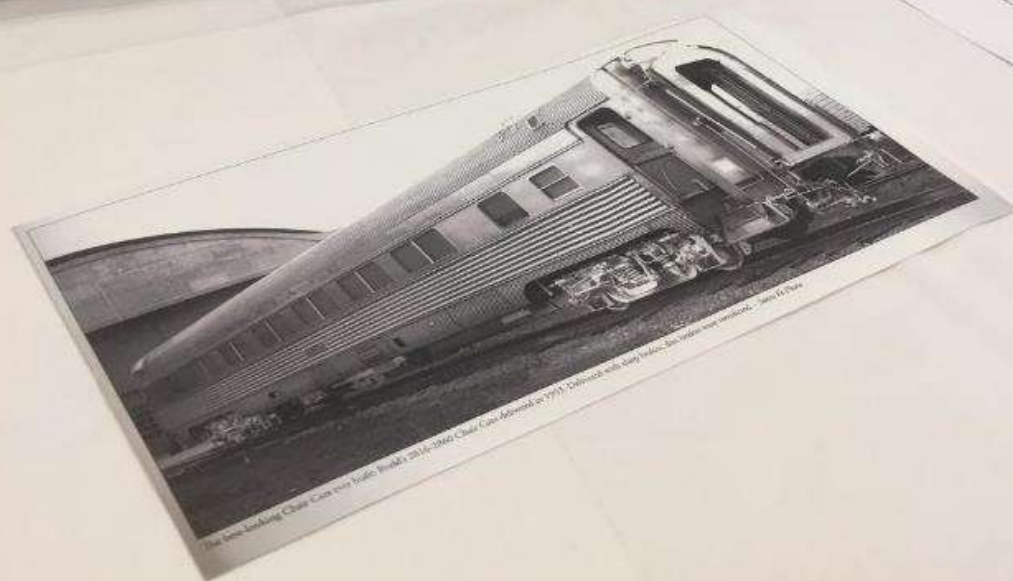
© 2014 American Association of Model Railroaders

1001





[illegible]







iver 2021

Points Awarded

model model not per the kit plan
kit plan >90% some modification
to some modification <20%
AMERICAN STANDARDS
Soldered metal
patterns

2

Carey Williams held a clinic on vintage O Scale and the manufacturers thereof



Hugh Blaney
showed how
he built
roofs with
different
types of
materials



Charles Goodrich showed modifications he had made to different types of saws to permit accurate measurement





All too soon
it was over,
and time for
me to head
for my next
destination
(at another
really early
hour...)



So – is 2 rail O Scale dying out?

I don't think so. There are some young people involved, and some younger manufacturers.

The O Scale Kings has been revitalized with some new blood and has taken on some much-needed tasks to make access to this hobby easier for new folks.

I try to get to the O Scale National every year. My success rate is about 50%, but I'm trying to improve it...

There are other big O Scale shows, notably O Scale South (February in Roswell, GA), Chicago March Meet (late March/early April), O Scale West (usually Memorial Day weekend in Santa Clara, CA) and Indianapolis (October), as well as some smaller venues like Gardner, MA on Sat., Oct. 2, 2021.

I hope you enjoyed this brief look at SONC 2021. A copy of this presentation will be placed on the GFMRRRC website.

Jamie

Here are some links you may find interesting

- O Scale Central - <https://oscalecentral.com/>
 - O Scale Central is the hub for several new web pages to ease entrance into the hobby
- O Scale Kings - <https://oscalekings.org/WP/>
 - The O Scale Kings is the primary organization behind 2 Rail O Scale
- The O Scale Resource - <https://oscaleresource.com/WP/>
 - The O Scale Resource is a free bi-monthly electronic magazine focused on modeling. It can be downloaded in pdf format too.
- Appalachian & Ohio Railroad - <https://www.aorailroad.com/>
 - See more of David Stewart's magnificent layout